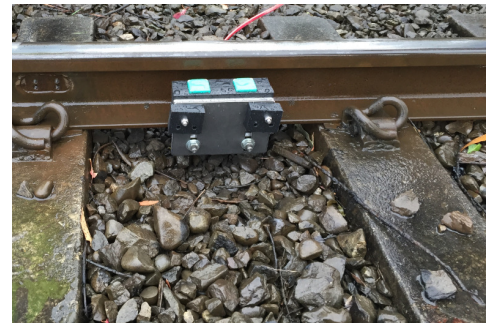


# A New & Unique Track Site Safety System

## Designed for Railway Maintenance & Work Crews

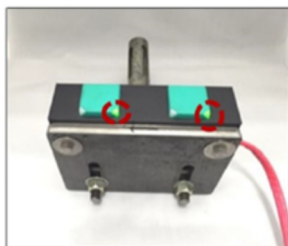


## How Does It Work?

- Warns rail personnel when a rail movement has entered a protected work area;
- Warns personnel whether rail movement is authorised or not;
- Provides opportunity for track crew to leave their location / vehicles / equipment and clear the track;
- The system broadcasts a radio message over the Emergency channel;
- The Siren is activated, flashing warning lights and integrated pager & radio messaging;
- Notifies crew when rail movement has exited the work-site - "all clear".

## System Benefits:

- Additional safety precaution for on-site crew members;
- Ease of Set-up—minutes only;
- Batteries last entire day;
- Low battery indicator;
- Fully mobile & re-deployable;
- No wires or cables;
- All communication data fully logged;
- Interconnects with Pagers & Radios;
- Eliminates use of detonators.



**Rail Sensor Unit**



**Central Alert Unit** Located at work site - visual and audio alarm.



**Repeater Unit:** Increases distance between Site Entry & Exit points

### Alert Options:

